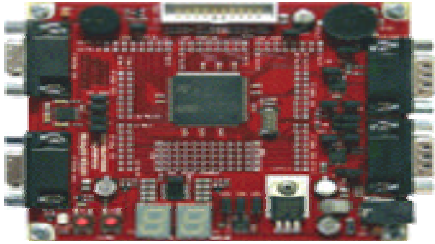


MCBSTR730 Evaluation Board (ARM 7 Board)



The Keil MCBSTR730 Evaluation Board introduces you to the STMicroelectronics STR730 ARM family and allows you to create and test working programs for this advanced architecture.

The Keil MCBSTR730 Evaluation Board connects to your PC using the serial port (for Flash download) or the JTAG interface (for program debug using the Keil ULINK USB-JTAG Adapter and the μ Vision IDE and Debugger).

Serial and CAN interfaces, 7-segment LED display, and analog input (via potentiometer) make this board a great starting point for your next ARM project.

Evaluation Software

The MCBSTR730 Evaluation Board and Starter Kit include RealView MDK-ARM Evaluation Tools. These tools help you get started writing programs and testing the microcontroller and its capabilities. Sample applications which run on the MCBSTR730 are included.

Components Included

The MCBSTR730 Evaluation Board includes the following:

- ✍ MCBSTR730 Evaluation Board,
- ✍ RealView MDK-ARM Evaluation Tools.

System Requirements

- ✍ PC with one available USB port,
- ✍ Windows 2000, XP and Vista,
- ✍ One CD-ROM drive,
- ✍ ULINK family USB-JTAG Adapter for high-performance Debug/Download (optional).

Starter Kit

The MCBSTR730 is also available as a starter kit which includes the ULINK-ME USB-JTAG adapter.

Part numbers are:

- ✍ **MCBSTR730**
- ✍ **MCBSTR730UME** MCBSTR730 + ULINK-ME